



# GAT MONTHLY MEMBERSHIP PROGRESS REPORT

Results as of: 4/30/2023

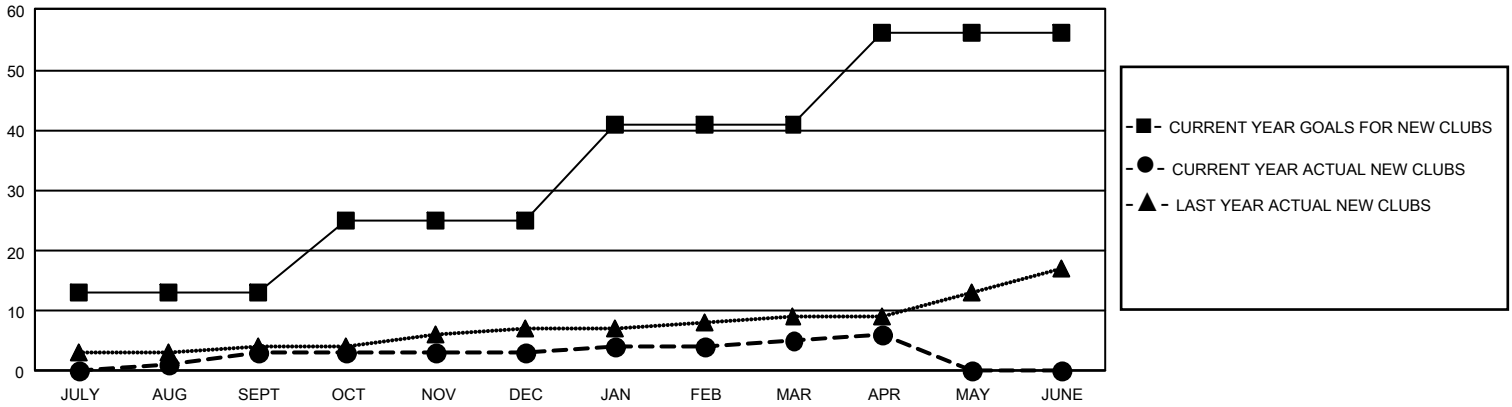
## GMT Constitutional Area 1, Group B

REPORT DOES NOT INCLUDE CLUBS IN UNDISTRICTED AREAS.

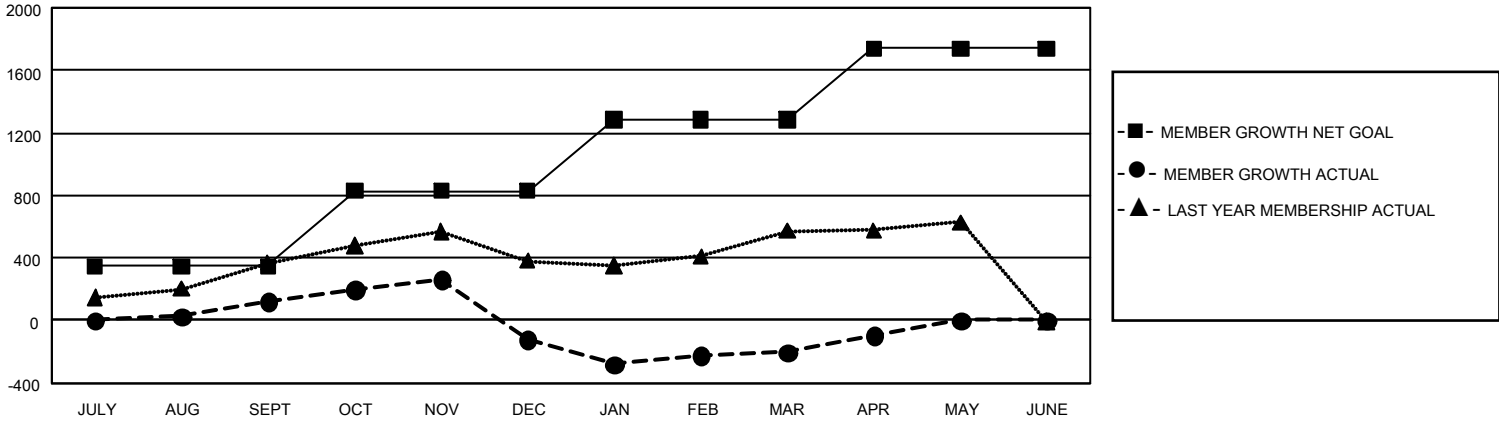
Clubs			
RESULTS FOR 2022-2023			
QUARTER	NEW CLUB GOAL	NEW CLUBS	DROPPED CLUBS
JULY/AUG/SEPT	39	3	5
OCT/NOV/DEC	36	0	17
JAN/FEB/MAR	48	2	4
APR/MAY/JUNE	45	1	1

Members			
RESULTS FOR 2022-2023			
QUARTER	MEMBER GROWTH NET GOAL	MEMBER GROWTH ACTUAL	DROPPED MEMBERS ACTUAL (including transfers)
JULY/AUG/SEPT	345	1,023	803
OCT/NOV/DEC	482	779	945
JAN/FEB/MAR	460	928	849
APR/MAY/JUNE	452	354	209

GOALS AND ACTUAL NEW CLUBS CUMULATIVE



GOALS AND ACTUAL MEMBERS CUMULATIVE



<b>DROPPED CLUBS: 27</b>	560 CLUBS OF 908 ADDED 1 OR MORE NEW MEMBERS	<b>GENDER DISTRIBUTION</b>	
		MALE 13,751 (57.37%) FEMALE 10,198 (42.55%) NON BINARY 2 (0.01%) PREFER NOT TO ANSWER 18 (0.08%)	
<b>DROPPED MEMBERS</b>		<a href="#">CLICK HERE FOR CUMULATIVE MEMBERSHIP DATA</a>	
DECEASED 306 CLUB CANCELLED 180 OTHER 2,324 <b>TOTAL 2,810</b>	TOTAL FAMILY UNIT MEMBERS 4,731 FAMILY MEMBERS PAYING HALF DUES 2,497		